

Bugs & Wish list

doc.t.o 19.x: I can't upload images to wiki pages (CSRF) with elFinder | Tiki Wiki CMS Groupware :: Development

doc.t.o 19.x: I can't upload images to wiki pages (CSRF) with elFinder

Status

🟡 Pending

Subject

doc.t.o 19.x: I can't upload images to wiki pages (CSRF) with elFinder

Version

19.x

Category

- Error
- Community projects
- Dogfood on a *.tiki.org site
- Regression

Feature

File Gallery (elFinder or standard UI)

Edit interface (UI)

Resolution status

New

Submitted by

Xavier de Pedro

Lastmod by

Xavier de Pedro, lindon

Rating

★★★★★ (1) ?

Related-to

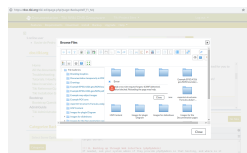
- 🟢 "The following mandatory fields are missing: Category" after anti-CSRF prompt
- 🟢 CSRF False positives
- 🟢 Potential cross-site request forgery (CSRF) detected. Operation blocked. Required headers are missing.
- 🟢 Voting in a poll gives CSRF warning.

Description

I attempted to upload a simple image to a doc.t.o page (it seems to be using 19.x and elfinder) and I got error message about CSRF

“

Potential cross-site request forgery (CSRF) detected. Operation blocked. Reloading the page may help.



I had to disable elFinder to allow uploading images to doc.t.o.

Feel free to re-enable elFinder feature in doc.t.o anyone once it's confirmed to have been fixed.

Solution

I was able to upload an image using the elFinder dialog on doc.t.o without any issues. Please check again.

Workaround

Disable elFinder

Importance

6

Easy to solve?

5

Priority

30

Demonstrate Bug (Tiki 19+)

Please demonstrate your bug on show2.tiki.org

Version: trunk ▼

Demonstrate Bug (older Tiki versions)

Please demonstrate your bug on show.tikiwiki.org

Version: 18.x ▼

Ticket ID

6931

Created

Sunday 18 November, 2018 12:30:32 GMT-0000

by Xavier de Pedro

LastModif

Monday 21 January, 2019 03:22:51 GMT-0000

Comments



luciash d' being 18 Nov 18 16:37 GMT-0000

Hola Xavi! Can you put a note in <https://tiki.org/blog2--tiki-org-Websites-Gardener-Blog?> (so we do not forget)



Xavier de Pedro 18 Nov 18 20:58 GMT-0000

Done! Thanks luci for the reminder

<https://tiki.org/blogpost769-disabled-elfinder-in-doc-t-o-due-to-bug>



Saša Janiška 05 Jun 19 10:04 GMT-0000

Just to remind you that the same problem is in the tiki-v21trunk.



Doug Higby 15 Nov 19 19:52 GMT-0000

I also had to disable elfinder in order for uploading images to work on my own site running tiki 20.1. It always presented CSRF error.

For what it is worth, it has to do with SEFURL. If I turn off SEFURL then I can upload images without getting the CSRF error. But I need SEFURL so I'm stuck with the default gallery interface.



Jonny Bradley 16 Nov 19 12:35 GMT-0000

Hi all

I had a go at this the other day as i was getting these CSRF errors uploading within a blog post on one site, but it's fine in the file gallery (in elFinder). However, on my local test site it was working fine in the same setup (both had sefurl enabled, but i'll look into that).

So are you all finding it failing in all instances, or just some (like blog post editing)?



lindon 17 Nov 19 04:51 GMT-0000

I haven't been able to recreate the issue with a wiki page or blog post, including with SEFURL on. Are others still having issues?

Attachments

filename	created	hits	comment	version	filetype
----------	---------	------	---------	---------	----------

No attachments for this item

The original document is available at
<https://dev.tiki.org/item6931-doc-t-o-19-x-I-can-t-upload-images-to-wiki-pages-CSRF-with-elFinder>