

Bugs & Wish list

dev.t.o: Can't upload images with elFinder | Tiki Wiki CMS Groupware :: Development

dev.t.o: Can't upload images with elFinder

Status

Closed

Subject

dev.t.o: Can't upload images with elFinder

Version

12.x

12.x Regression

Category

- Error
- Usability
- Community projects
- Dogfood on a *.tiki.org site
- Regression

Feature

File Gallery (elFinder or standard UI)

Resolution status

Fixed or Solved

Submitted by

Xavier de Pedro

Lastmod by

Xavier de Pedro

Rating

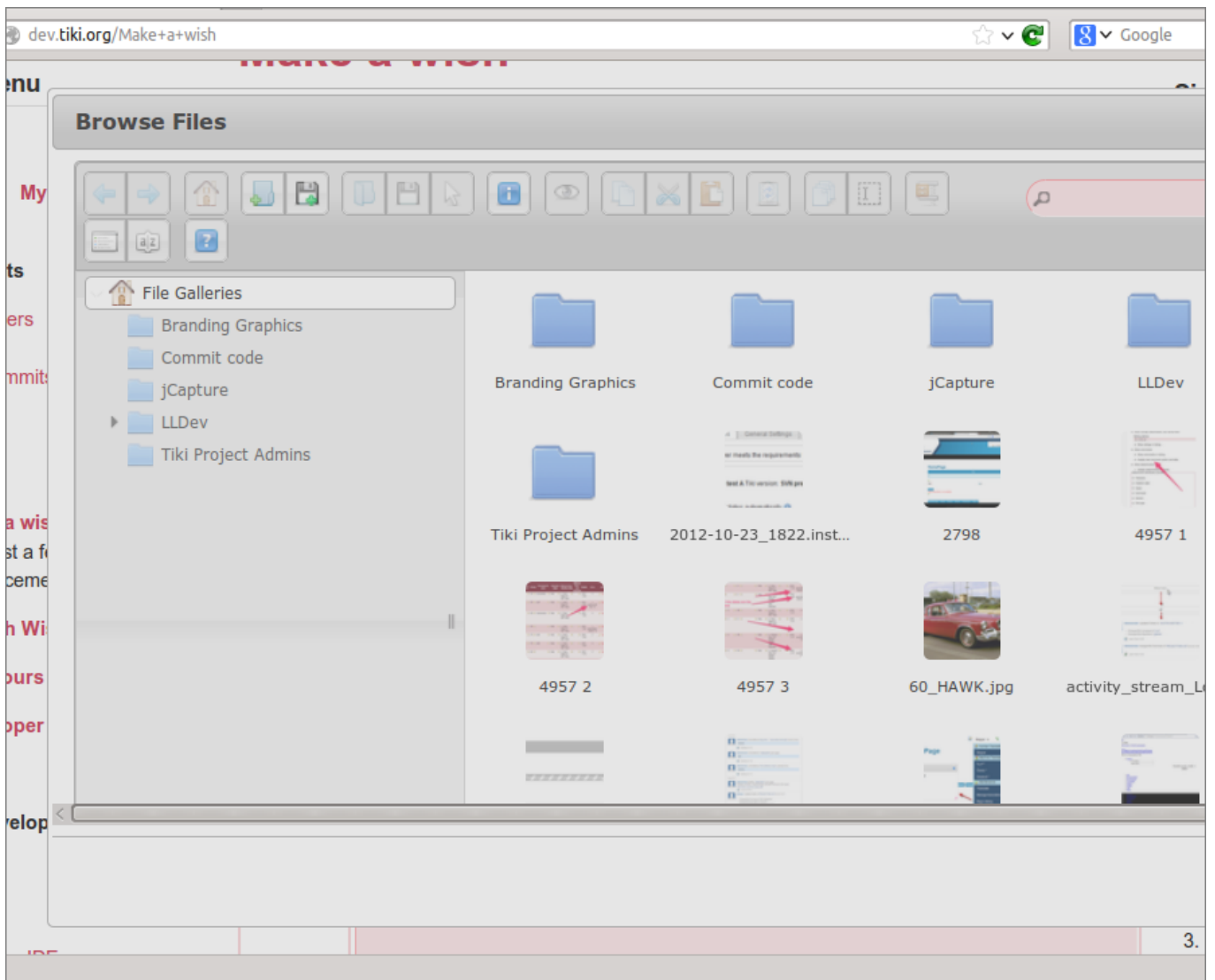
(1)

Description

To reproduce:

- go to Make a wish
- click at the icon to "Choose or upload images"
The pop up window entitle "Browse Files" will show up, with the elFinder interface.
- Click at the Button to upload files (disk icon with a green "plus" sign)
the focus goes to the search box, and the user can't do anything else than write into the search box. You can't close the popup window, nor move it, nor resize it.
- If you close the browser window, you'll loose all the information you already typed in the text area (it happened to me once :-/)

Reproduced with Chrome and Firefox.



Retest:



Importance

9

Easy to solve?

7

Priority

63

Demonstrate Bug (Tiki 19+)

Please demonstrate your bug on show2.tiki.org

Version: **trunk** ▼

Demonstrate Bug (older Tiki versions)

Please demonstrate your bug on show.tikiwiki.org

Version: **18.x** ▼

Ticket ID

5044

Created

Monday 09 December, 2013 10:10:22 GMT-0000
by Xavier de Pedro

LastModif

Friday 07 February, 2014 09:38:20 GMT-0000

Comments

Attachments

 	filename	created	hits	comment	version	filetype	
--------	----------	---------	------	---------	---------	----------	--------

No attachments for this item

The original document is available at

<https://dev.tiki.org/item5044-dev-t-o-Can-t-upload-images-with-elFinder>